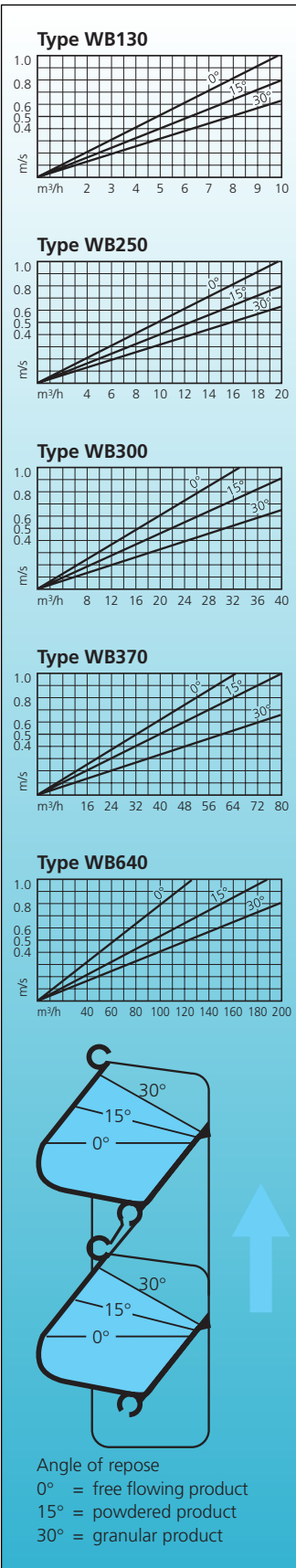
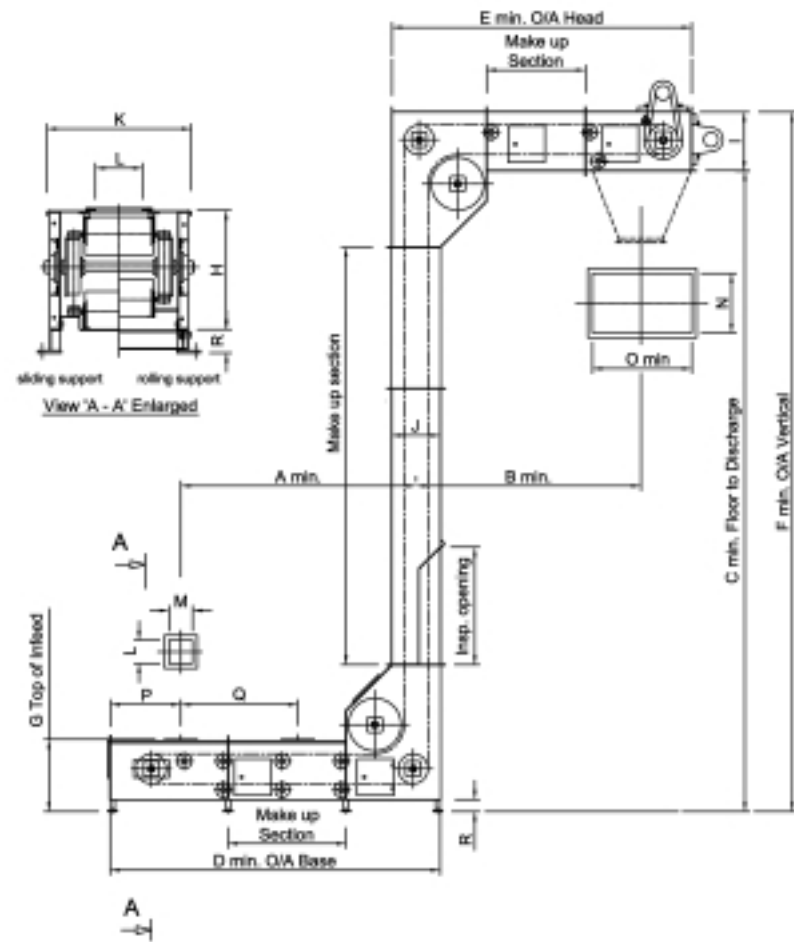


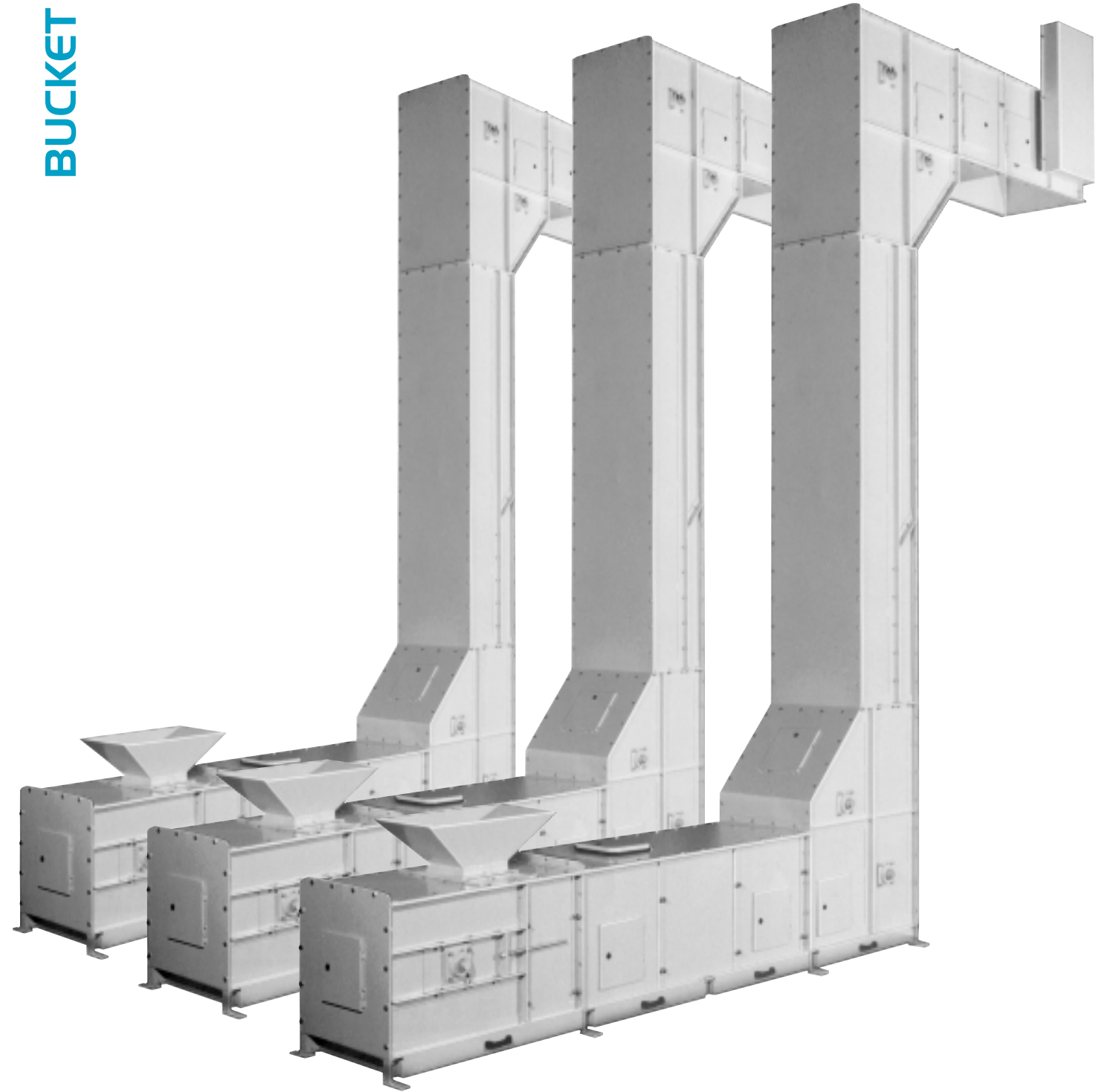
# CONVEYING CAPACITIES



|          | WB 130 | WB 250 | WB 300 | WB370 | WB640 |
|----------|--------|--------|--------|-------|-------|
| A (MIN.) | 470    | 470    | 995    | 1150  | 1475  |
| B (MIN.) | 795    | 950    | 1255   | 1415  | 1625  |
| C (MIN.) | 800    | 930    | 1900   | 1900  | 2350  |
| D (MIN.) | 1000   | 1000   | 1800   | 2100  | 2900  |
| E (MIN.) | 1100   | 1300   | 1700   | 2000  | 2400  |
| F (MIN.) | 1150   | 1370   | 2400   | 2500  | 3100  |
| G (MIN.) | 463    | 463    | 613    | 713   | 963   |
| H        | 350    | 350    | 500    | 600   | 750   |
| I        | 350    | 440    | 500    | 600   | 750   |
| J        | 260    | 260    | 410    | 550   | 750   |
| K        | 350    | 492    | 612    | 682   | 1032  |
| L (MAX.) | 80     | 150    | 200    | 250   | 500   |
| M (MIN.) | 200    | 200    | 200    | 250   | 500   |
| N        | 265    | 400    | 500    | 570   | 920   |
| O (MIN.) | 670    | 770    | 970    | 970   | 1170  |
| P (MIN.) | 400    | 400    | 600    | 675   | 1050  |
| Q (MIN.) | 450    | 450    | 670    | 720   | 1100  |
| R        | 100    | 100    | 100    | 100   | 200   |



# BUCKET ELEVATORS



**NERAK**  
 practical solutions  
 for a moving environment

**NERAK**

Ffrwdgrech Industrial Estate, Brecon, Powys LD3 8LA  
 Tel: +44 (0)1874 612900 Fax: +44 (0)1874 612918  
 Website: [www.nerak-uk.com](http://www.nerak-uk.com) Email: [info@nerak-uk.com](mailto:info@nerak-uk.com)

## BUCKET ELEVATORS

The continuous bucket conveyor is designed to transport bulk material from one or more infeed points to a single high level discharge point. Continuous conveying without transfers can be achieved with horizontal, vertical or inclined configurations.

All types of materials can be conveyed gently and quietly.

The product is fed into the moving bucket belt at a controlled rate, conveyed to high level and discharged under gravity.

This highly developed system with the toothed rubber chain as the driving medium is ideal for the gentle handling of delicate foodstuffs and equally for the conveying of abrasive, coarse and dense materials commonly used in the construction industry. The elevator structures are compact with simple adaption for installation in restricted areas. High throughputs can be achieved with low power consumption.

## BUCKET BELT

The plastic buckets are fitted one behind the other by means of a flexible connecting strip. Nylon rods with retaining clips pass through these connecting strips to suspend the buckets between two parallel rubber toothed chains. The assembly forms a strong, enclosed system of conveying.

The robust buckets can handle abrasive materials as well as hot products up to a temperature of 220°C.

All bucket belt components are food quality, do not corrode and require no lubrication.

The design of the NERAK continuous buckets can in certain cases act as a self cleaning system thus eliminating dust build up in the horizontal sections.

## STRUCTURES

NERAK continuous bucket elevators are available in various designs in mild steel painted or stainless steel.

- Totally enclosed heavy duty construction with standard and special profiles to suit large plants providing high efficiency
- Open construction with safety panels in solid or mesh materials. These allow internal visibility and access for easy cleaning with water, steam or special fluids
- Special designs for the food industry are available which are ideal for elevators involved in packaging and weighing products.

Clean-in-place systems and efficient bucket drying facilities can be incorporated into the NERAK designs.

## FEED SECTION

Any number of feed inlets can be incorporated. The width of the buckets determines the width of the fill point but lengths are variable to suit different applications.

A brush skirt for spillage prevention is fitted to the underside of the structure around the feed inlet to make contact with the moving buckets.

Suitable systems for material feeding are available on request.

## DISCHARGE SECTION

The NERAK continuous bucket conveyor has only one discharge point. The length of the discharge opening is designed to suit the behaviour of the product when discharging under gravity taking into account the bucket belt speed.

With sticky and wet materials a bucket knocker can be incorporated just after the normal discharge position.

When discharging into silos or hoppers, tailor made chutes can be provided. For discharging into multihead weighers and packaging equipment, vibratory feeders can be supplied supported within the elevator structure.

The geared motor is adjacent to the drive shaft either top, end or shaft mounted. An anti-run back device is also included to prevent run back when idle.

## TYPICAL APPLICATIONS

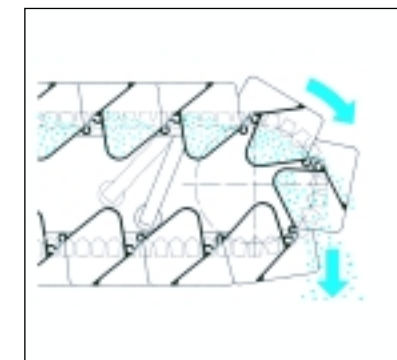
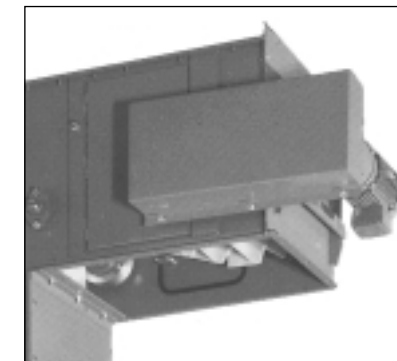
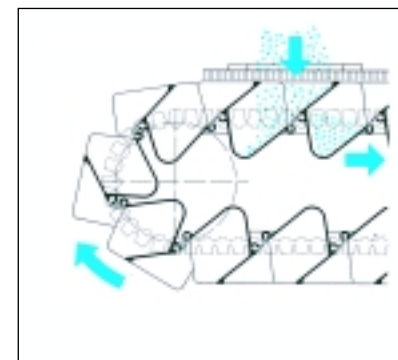
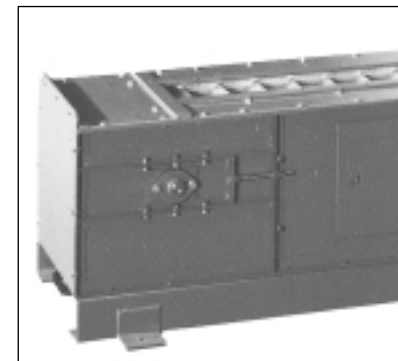
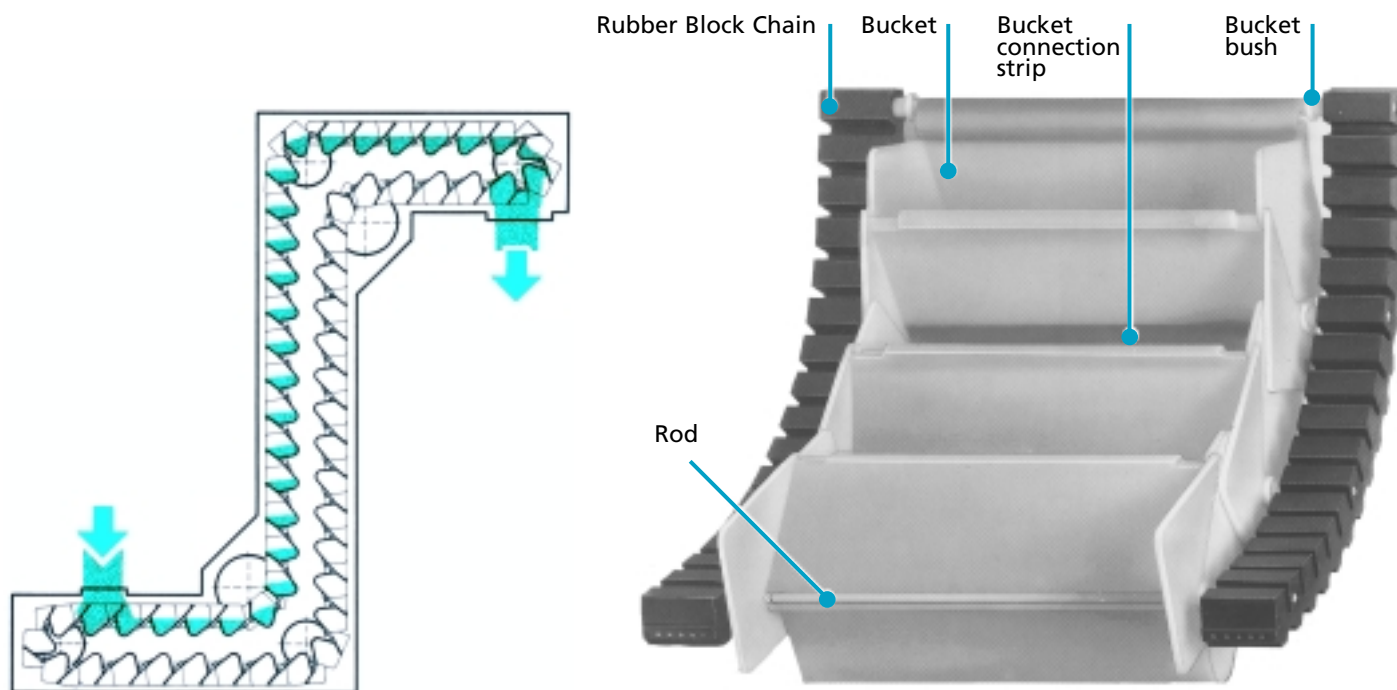
**Food Industry**  
Vegetables (raw and frozen), pulses, confectionery (wrapped and unwrapped), cereals, cocoa beans, potato crisps, snack foods, coffee, tea, milk powder, chocolate buttons, biscuits, grated cheese, sugar, peanuts, hazelnuts, most types of pet food and animal feeds.

**Building Industry**  
Limestone, sand, cement, plaster, gypsum, perlite, slag, dry mortar, dry chalk etc.

**Ceramics**  
Glass balls, marble sand, clay pellets, porcelain powder, structural clay.

**Chemical Industry**  
Caustic soda chips, ammonium nitrate, glass fibres, sodium carbonate, phosphates, sulphur pastilles, tablets, soap powder and ingredients.

**Other Industries**  
Alumina, filter dust, foundry sand, fertiliser, broken glass, mineral shavings, graphite, rubber pellets, carbon black, crushed waste and refuse, coke, small coal, seeds, carbon black etc.



## APPLICATION EXAMPLES

